

Natural changes of population 1961 – 2022

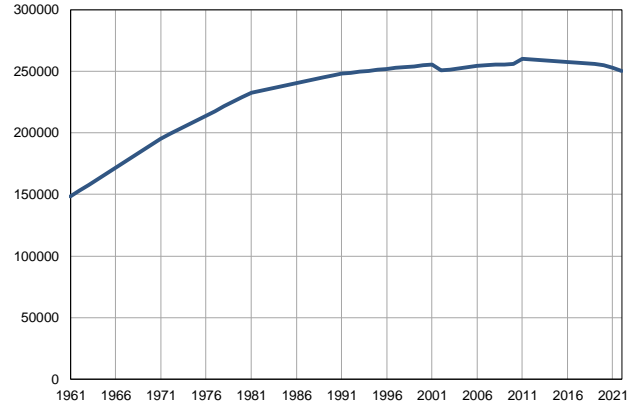
Profile
July 2023

City of Niš

	1961	2022
Population size	148354	250091
Livebirths, Number	2539	2340
Deaths, Number	1050	3763
Natural increase, Number	1489	-1423
Infants deaths, Number	196	14
Livebirths, per 1,000 population	17	9
Deaths, per 1,000 population	7	15
Natural increase, per 1,000 population	10	-6
Infants deaths, per 1,000 livebirths	77	6

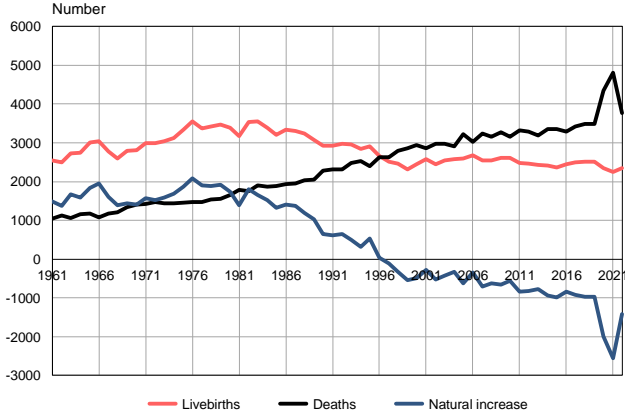
Source: Vital Statistics, SORS

Population size, 1961–2022



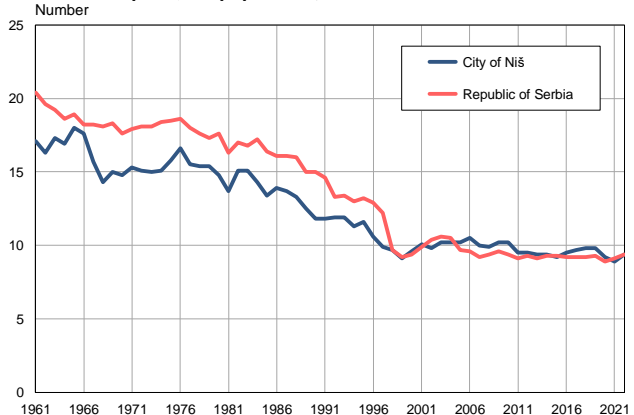
Source: Vital Statistics, SORS

Livebirths, deaths and natural increase, 1961–2022



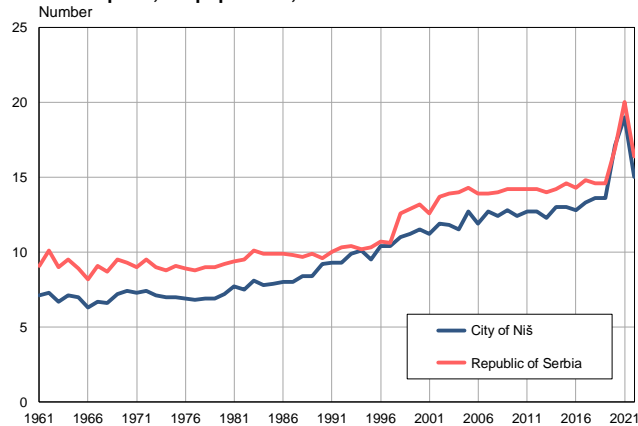
Source: Vital Statistics, SORS

Livebirths per 1,000 population, 1961–2022



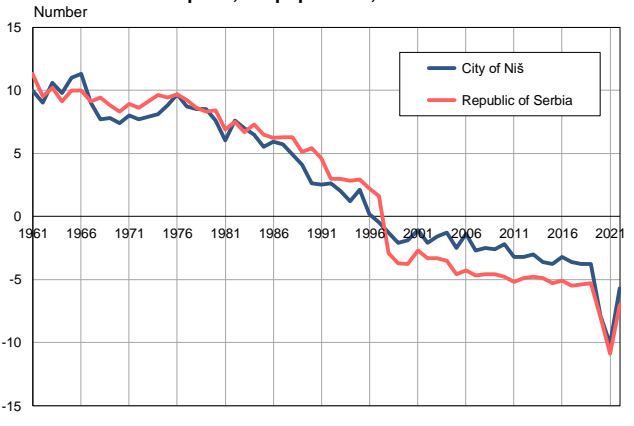
Source: Vital Statistics, SORS

Deaths per 1,000 population, 1961–2022



Source: Vital Statistics, SORS

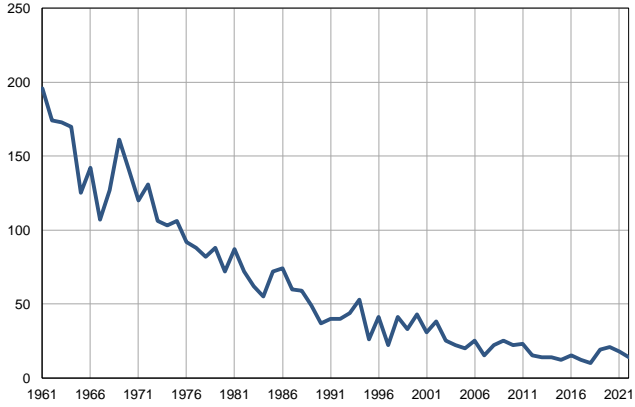
Natural increase per 1,000 population, 1961–2022



Source: Vital Statistics, SORS

Infants deaths, 1961–2022

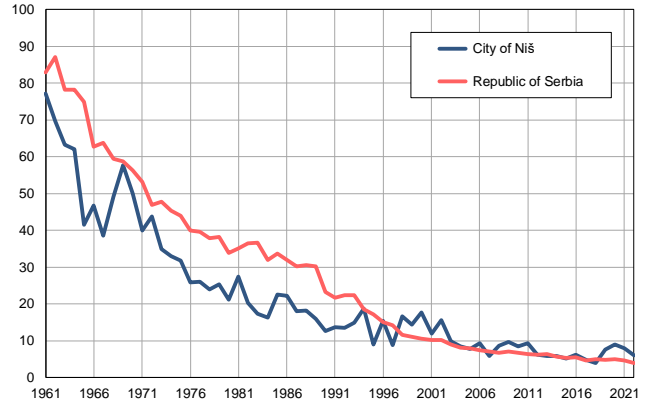
Number



Source: Vital Statistics, SORS

Infants deaths per 1,000 livebirths, 1961–2022

Number



Source: Vital Statistics, SORS

Table. Natural changes of population, City of Niš

Year	Number of population	Livebirths	Deaths	Natural increase	Infants deaths	per 1000 population			Infant deaths per 1000 livebirths
						Livebirths	Deaths	Natural increase	
1961	148354	2539	1050	1489	196	17.1	7.1	10.0	77.2
1962	153055	2496	1121	1375	174	16.3	7.3	9.0	69.7
1963	157755	2731	1059	1672	173	17.3	6.7	10.6	63.3
1964	162457	2743	1157	1586	170	16.9	7.1	9.8	62.0
1965	167157	3003	1167	1836	125	18.0	7.0	11.0	41.6
1966	171858	3033	1076	1957	142	17.6	6.3	11.3	46.8
1967	176559	2776	1180	1596	107	15.7	6.7	9.0	38.5
1968	181259	2587	1200	1387	127	14.3	6.6	7.7	49.1
1969	185961	2789	1346	1443	161	15.0	7.2	7.8	57.7
1970	190661	2817	1407	1410	141	14.8	7.4	7.4	50.1
1971	195362	2997	1418	1579	120	15.3	7.3	8.0	40.0
1972	199082	2999	1474	1525	131	15.1	7.4	7.7	43.7
1973	202802	3033	1438	1595	106	15.0	7.1	7.9	34.9
1974	206522	3124	1438	1686	103	15.1	7.0	8.1	33.0
1975	210243	3331	1462	1869	106	15.8	7.0	8.8	31.8
1976	213962	3556	1479	2077	92	16.6	6.9	9.7	25.9
1977	217682	3376	1480	1896	88	15.5	6.8	8.7	26.1
1978	221403	3415	1538	1877	82	15.4	6.9	8.5	24.0
1979	225123	3463	1550	1913	88	15.4	6.9	8.5	25.4
1980	228843	3392	1650	1742	72	14.8	7.2	7.6	21.2
1981	232563	3175	1788	1387	87	13.7	7.7	6.0	27.4
1982	234116	3543	1745	1798	72	15.1	7.5	7.6	20.3
1983	235668	3557	1906	1651	62	15.1	8.1	7.0	17.4
1984	237220	3382	1861	1521	55	14.3	7.8	6.5	16.3
1985	238772	3202	1879	1323	72	13.4	7.9	5.5	22.5
1986	240325	3332	1929	1403	74	13.9	8.0	5.9	22.2
1987	241877	3309	1943	1366	60	13.7	8.0	5.7	18.1
1988	243430	3238	2039	1199	59	13.3	8.4	4.9	18.2
1989	244981	3072	2047	1025	49	12.5	8.4	4.1	16.0
1990	246534	2920	2276	644	37	11.8	9.2	2.6	12.7
1991	248086	2929	2311	618	40	11.8	9.3	2.5	13.7
1992	248842	2971	2317	654	40	11.9	9.3	2.6	13.5
1993	249598	2963	2473	490	44	11.9	9.9	2.0	14.8
1994	250354	2839	2527	312	53	11.3	10.1	1.2	18.7
1995	251110	2916	2390	526	26	11.6	9.5	2.1	8.9
1996	251866	2663	2630	33	41	10.6	10.4	0.2	15.4
1997	252622	2512	2623	-111	22	9.9	10.4	-0.5	8.8
1998	253378	2462	2788	-326	41	9.7	11.0	-1.3	16.7
1999	254134	2313	2851	-538	33	9.1	11.2	-2.1	14.3
2000	254889	2443	2936	-493	43	9.6	11.5	-1.9	17.6
2001	255646	2579	2854	-275	31	10.1	11.2	-1.1	12.0
2002	250847	2453	2977	-524	38	9.8	11.9	-2.1	15.5
2003	251198	2550	2973	-423	25	10.2	11.8	-1.6	9.8
2004	252131	2582	2910	-328	22	10.2	11.5	-1.3	8.5
2005	253214	2591	3221	-630	20	10.2	12.7	-2.5	7.7

Table. Natural changes of population, City of Niš

Year	Number of population	Livebirths	Deaths	Natural increase	Infants deaths	per 1000 population			Infant deaths per 1000 livebirths
						Livebirths	Deaths	Natural increase	
2006	254164	2672	3018	-346	25	10.5	11.9	-1.4	9.4
2007	254970	2544	3244	-700	15	10.0	12.7	-2.7	5.9
2008	255295	2539	3156	-617	22	9.9	12.4	-2.5	8.7
2009	255479	2612	3266	-654	25	10.2	12.8	-2.6	9.6
2010	255699	2611	3162	-551	22	10.2	12.4	-2.2	8.4
2011	260307	2482	3316	-834	23	9.5	12.7	-3.2	9.3
2012	259790	2465	3291	-826	15	9.5	12.7	-3.2	6.1
2013	259125	2423	3190	-767	14	9.4	12.3	-3.0	5.8
2014	258500	2420	3362	-942	14	9.4	13.0	-3.6	5.8
2015	257883	2364	3355	-991	12	9.2	13.0	-3.8	5.1
2016	257348	2448	3284	-836	15	9.5	12.8	-3.2	6.1
2017	256825	2498	3417	-919	12	9.7	13.3	-3.6	4.8
2018	256381	2510	3484	-974	10	9.8	13.6	-3.8	4.0
2019	255901	2514	3485	-971	19	9.8	13.6	-3.8	7.6
2020	254723	2341	4344	-2003	21	9.2	17.1	-7.9	9.0
2021	252655	2241	4801	-2560	18	8.9	19.0	-10.1	8.0
2022	250091	2340	3763	-1423	14	9.4	15.0	-5.7	6.0

Source: Vital Statistics, SORS

Definitions

Population size

Number of population in the respective year. The data on the number of population in 1961, 1971, 1981 and 1991 are census data, while for the inter-census years the number of population was calculated as an average inter-census difference. From 2002 are given the population estimates that were calculated according to the census of population results and the annual statistics of natural mechanical population movements.

Livebirths

Absolute number of live births in the course of a year. Live born child means a child giving vital signs after birth (breathing, i.e. heartbeat), even for the shortest time, regardless the mother's pregnancy duration.

Deaths

Absolute number of deaths in the course of a year. Deceased is a person that whenever after having been born live, shows permanently stopped vital signs.

Natural increase

Natural population increase is the number of live births minus the number of deaths.

Infants deaths

Absolute number of infants deaths in the course of a year. Deceased infant is a child that after having been born live and before aged one year, shows permanently stopped vital signs.

Livebirths, per 1 000 population

Livebirths rate is the ratio of the number of live births and the population size in the respective year. The number of live births is divided by the population size and then multiplied by 1000.

Deaths, per 1 000 population

General mortality rate represents the ratio between the number of deaths and the population size in the respective year. The number of deaths is divided by population size and then multiplied by 1000.

Natural increase, per 1 000 population

Natural population increase rate is the difference between the number of live births and the number of deaths, in relation to the population size in the respective year.

Natural population increase rate = (number of live births - number of deaths) / population size * 1000

Infants deaths, per 1 000 livebirths

Infant mortality rate is the ratio of deceased children under 1 year of age and live births in the respective year. The mortality rate is expressed per 1000 live births.

Infant mortality rate = (number of deceased children under 1 year of age / number of live births) * 1000

Additional info:



Download all database data in Excel format:

[Data](#)



DevInfo profiles:

devinfo.stat.gov.rs/SerbiaProfileLauncher/?lang=en



DevInfo online database:

devinfo.stat.gov.rs/vitalna



For additional information or questions please contact:

devinfo@stat.gov.rs